




**Linköping**  
Where ideas come to life



# Family support and informal adult learning adapted to the need of different groups

14-17/10 2013

# Linköping municipality

**All inhabitants** 2012 12 31 **149 000**

**Born abroad** **21 000**

**14%** same as in the whole Sweden

Bosnien-Hercegovina 1 137

Iran 1 437

Irak 3 723

Jugoslavien 810

Norden (Finland, Norway, Denmark) 1 447

Somalia 1 624

Germany 553

Others 10 208

## 0-18 years

Irak 1832

Somalia 925

Syrien 447

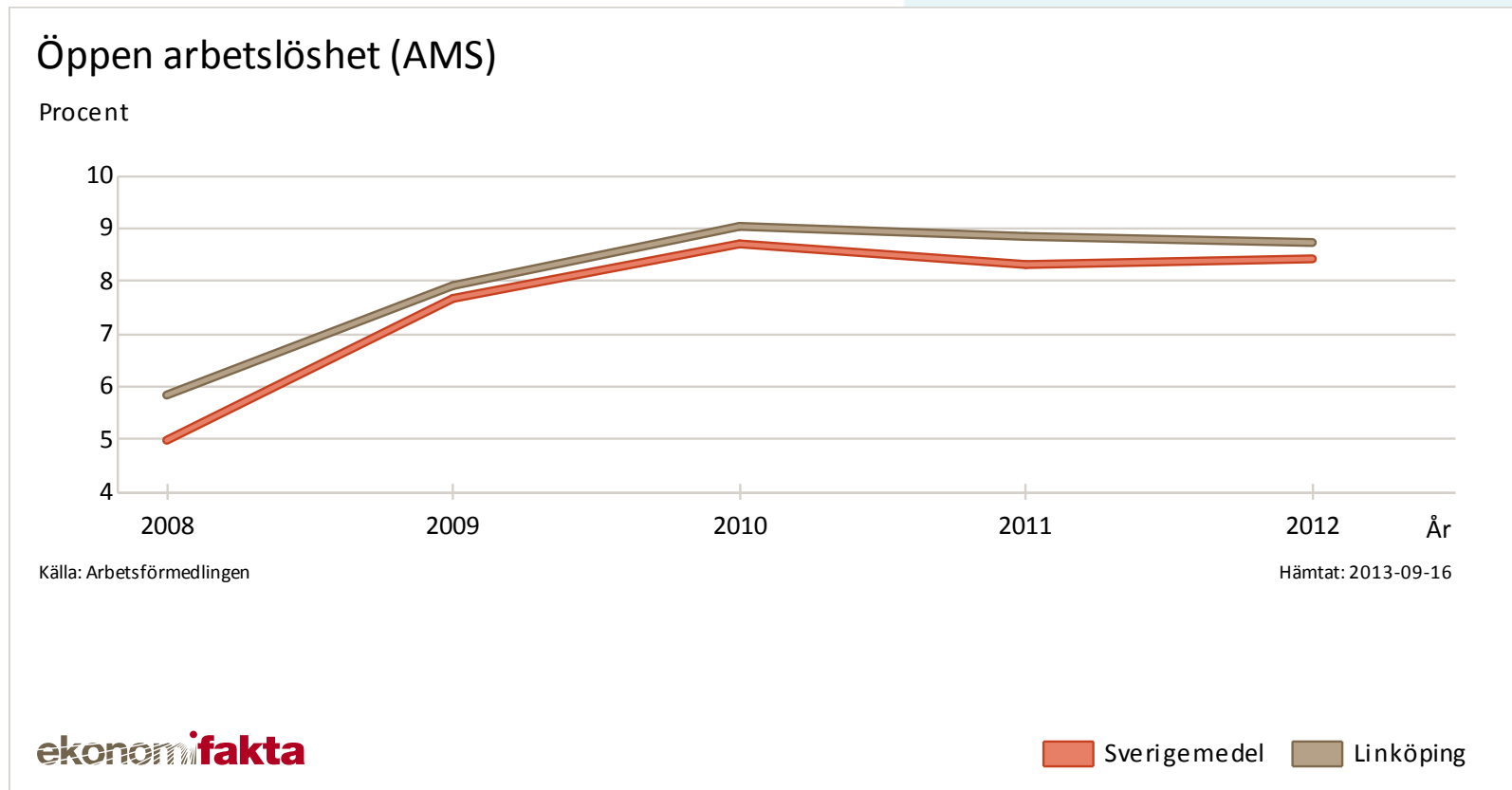
Iran 400

Bosnien/Hercegovina 330

Jugoslavien 318



# Open unemployment in percent



Skäggetorp 18,0

Berga 13,8

# Linköpings kommun

Revision

Valnämnd

Kommunfullmäktige

11 geografiska utskott | Ekonomiutskott | Valberedning

Anställnings-  
myndighet

## Kommunstyrelse

Planeringsutskott | Personalutskott  
Mål- och utvärderingsutskott

### Uppdragsnämnder

Barn- och  
ungdomsnämnd

Bildningsnämnd

Kultur- och  
fritidsnämnd

Samhälls-  
byggnadsnämnd

Omsorgsnämnd

Äldrenämnd

### Myndighetsnämnder

Överförmyndar-  
nämnd

Bygg- och  
miljönämnd

Socialnämnd

Utförarstyrelse

Anställnings-  
myndighet

### Verksamhet i förvaltningsform

Kommunstyrelsens förvaltning

Utbildningsförvaltningen

Kultur- och fritidsförvaltningen

Miljö- och samhällsbyggnadsförvaltningen

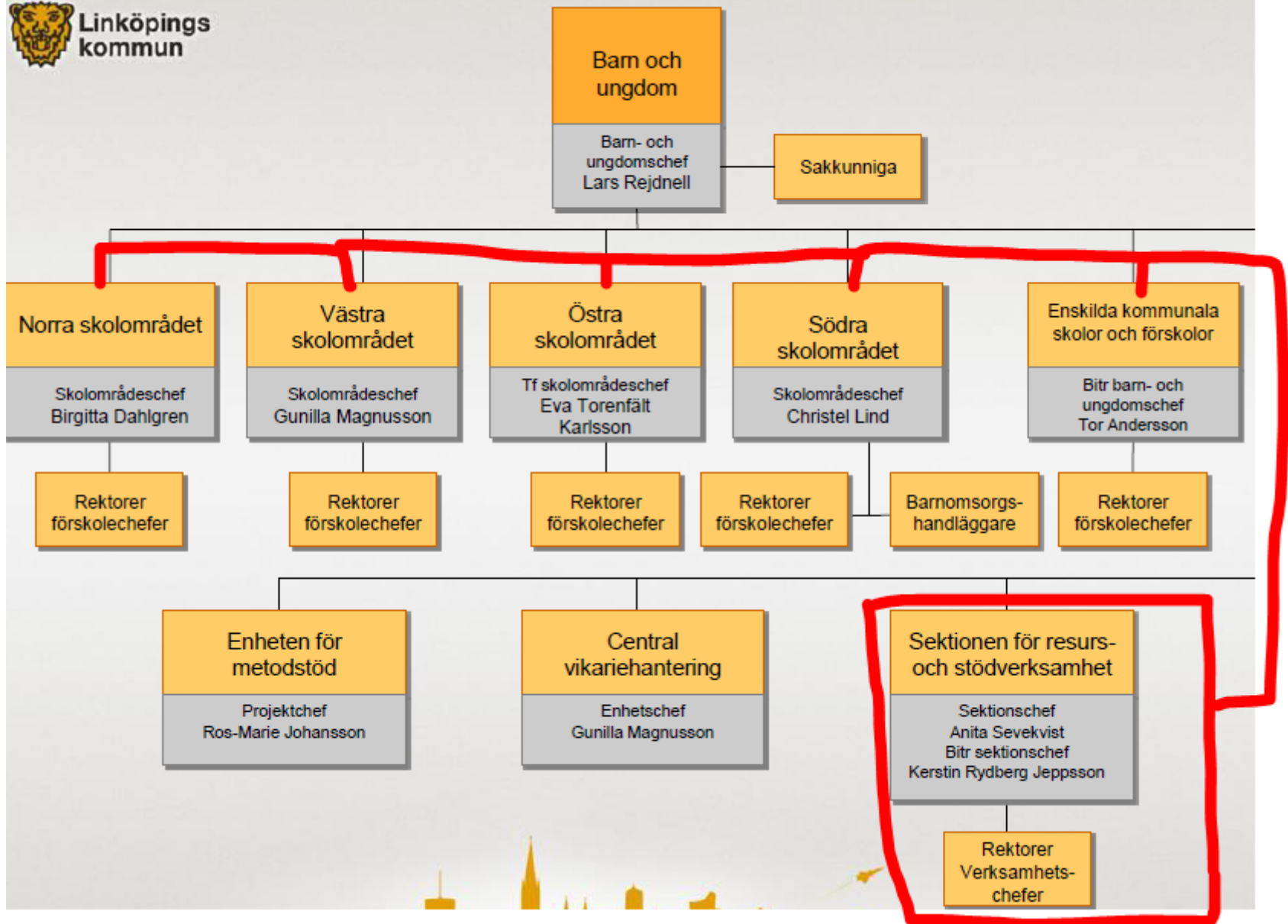
Omsorgs- och äldreförvaltningen

Socialförvaltningen

Utförarstyrelsens förvaltning Leanlink



Linköping  
Där idéer blir verklighet



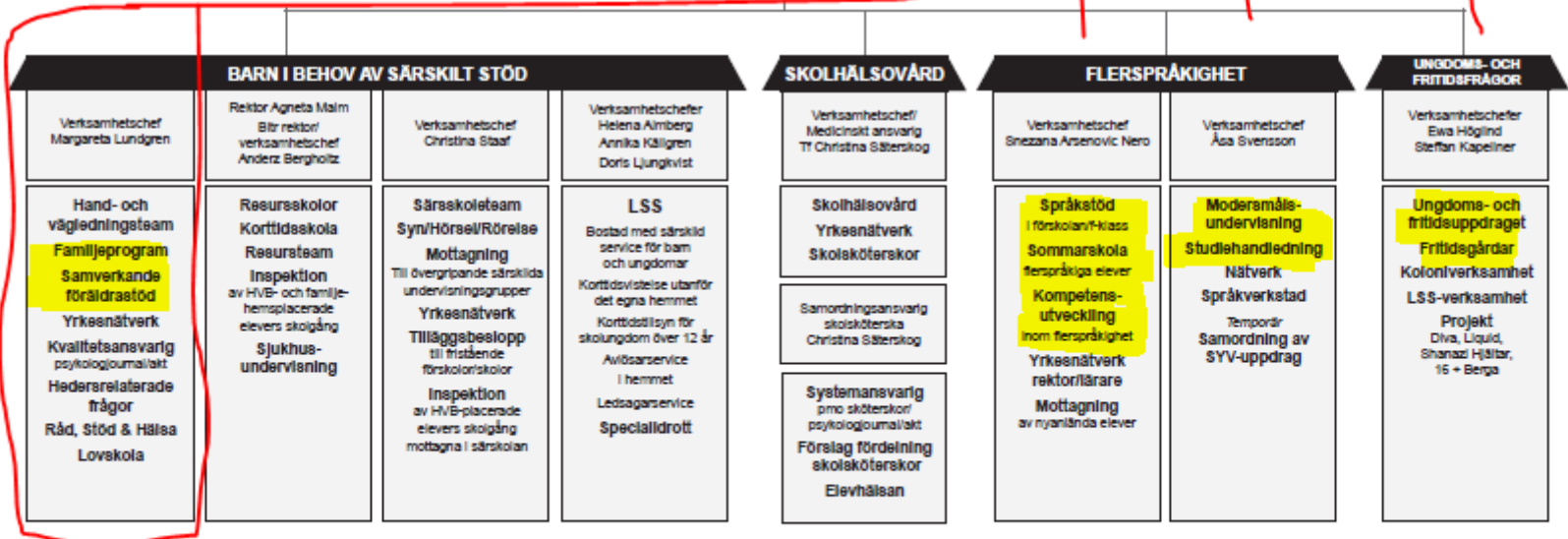


Sektionschef  
Anita Sevekvist

Biträdande Sektionschef  
Kerstin Rydberg Jeppsson

**Ekonomi- och personalfunktion**  
Ekonom: Margareta Lensell  
- Interkommunal ersättning  
Lena Wahlgren  
- Inklusiva kommunala frskolor  
HR-konsult: Maria von Ekensteen  
Lena Wahlgren

**Stödfunktion**  
Administration: Eva Barklev  
Anna-Maria Granath  
Marti Gunnarsson  
Lena Lundkvist  
Britt-Marie Wikvist  
Marie Österholm



Vision – Från hinder till möjlighet

# Immigrants and disadvantaged groups

- Department of social service
- The Swedish Social Insurance Administration
- Unemployment office
- Adult education



# Brief background about parenting preventively work in Linköping

- 2000 The first parenting course started in Linköping
- 2001-2003 Project: The Best for children and youth,
- 2004 The first Family Welfare Center were established
- 2004-2009 Continued development work. Pre-schools and schools had opportunity to send proposals for new pedagogical ideas and get funding to test them.
- 2010-2013 National parenting project

# **We offer universal parenting support for all parents**

## **Two tracks**

**Everyone  
who wants to  
participate**

**Immigrants and  
parents with  
special needs**

# Proportionate universalism

To reduce the steepness of the social gradient in health, actions must be universal, but with a scale and intensity that is proportionate to the level of disadvantage.

**Universal**  
**Selektively**  
**Indicated**

Closing the gap  
The Marmot Review 2010

# **The basis for our preventively work in Linköping**

**Those who have the greatest impact of the child's  
emotional and intellectual development is the  
parents.**

**One of the greatest risk factors for a child is to  
drop out of school or not go through with  
approved grades**

# National focus on parenting 2009-2013

Municipalities and universities together



The institute has since 2009 distributed 1,6 million euro to support 21 different parent support project and two of them in Linköping.

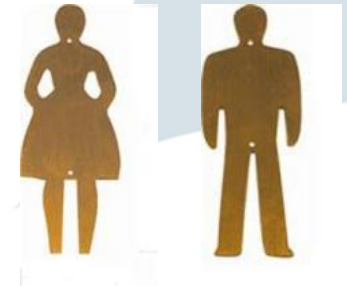
The municipality of Linköping and the University of Linköping together.



## Long-term efforts to promote health and to prevent illness among children.

### Three objectives:

1. Increase collaboration in parenting between operators whose activities are directed at parents.



## Objectives:

2. Increase the number of health arenas and forums for parents.



3. Increase the number of parents participating in training in health promotion and universal, evidence-based parenting programs.

# National overview of support for new immigrants in Sweden

- Plan for establish and housing
- Introduction allowance
- Swedish for immigrants
- Information in their mother tongue about life in Sweden
- Coaching from the unemployment office



# What's then the first and most important needs for migrants with children?

- Information concerning pre-school, schools, social services and other community functions
- Information and discussion about parenting in Sweden
- Opportunity to practice speaking Swedish
- Practical help to communicate with different services in the society
- Help with home work for both adults and children

# What we offers to parents (and children)

- "Bridge Builders" (link persons) on family welfare center and schools
- "To be a parent I Sweden". A course for information and discussion about parenting with tutors who speaks their own language, also in collaboration with the adult learning Swedish for immigrants.
- Parenting courses with tutors who are speaking their native language, e.g. Cope
- Activities in the local areas e.g. different courses: sewing, cafes for speaking swedish, learn to cycling, gymnastic for women also with tutors who speak Swedish.
- Family learning - parents and children learn together

# Who can support?

**Mother tongue teachers is a big resource!**

**Double-cultural competence**

**Trustworthy**

Mother tongue teachers has been the key to reach the newly arrived parents, but also earlier immigrant parents who for various reasons need information in their native language.

Native educators are role models of high status.

Good recruitment possibilities when new language groups arrives.

# Bridge builder

**Family welfare center**

**Local group activities**

**In schools**

Operate as a cultural and linguistic links between parents and professionals. They establish personal contact with parents through their professional capacity and network and provide information about activities, motivate to visit activities and self participate.

The number of parents with different ethnic background than Swedish has increased at the family welfare centers.  
Group activities has started with leaders who is both compatriots and Swedes.  
Knowledge transfer to the Swedish personnel through working together.

# Family welfare center

**A meeting point for all parents with children 0-5 year**

**A family welfare center include maternal health, child health, open pre-school and social services with emphasis on prevention.**

On a family welfare center, several professional groups such as midwives, nurses, preschool teachers and social workers work together.

The objective of the activity is to take the whole family's lives to promote good health among children and parents by:

- be available as a close venue
- strengthen the social network around the children and parents
- create work where parents and children are involved
- provide easily accessible support
- be a knowledge and information center

Just an inspiring picture.....

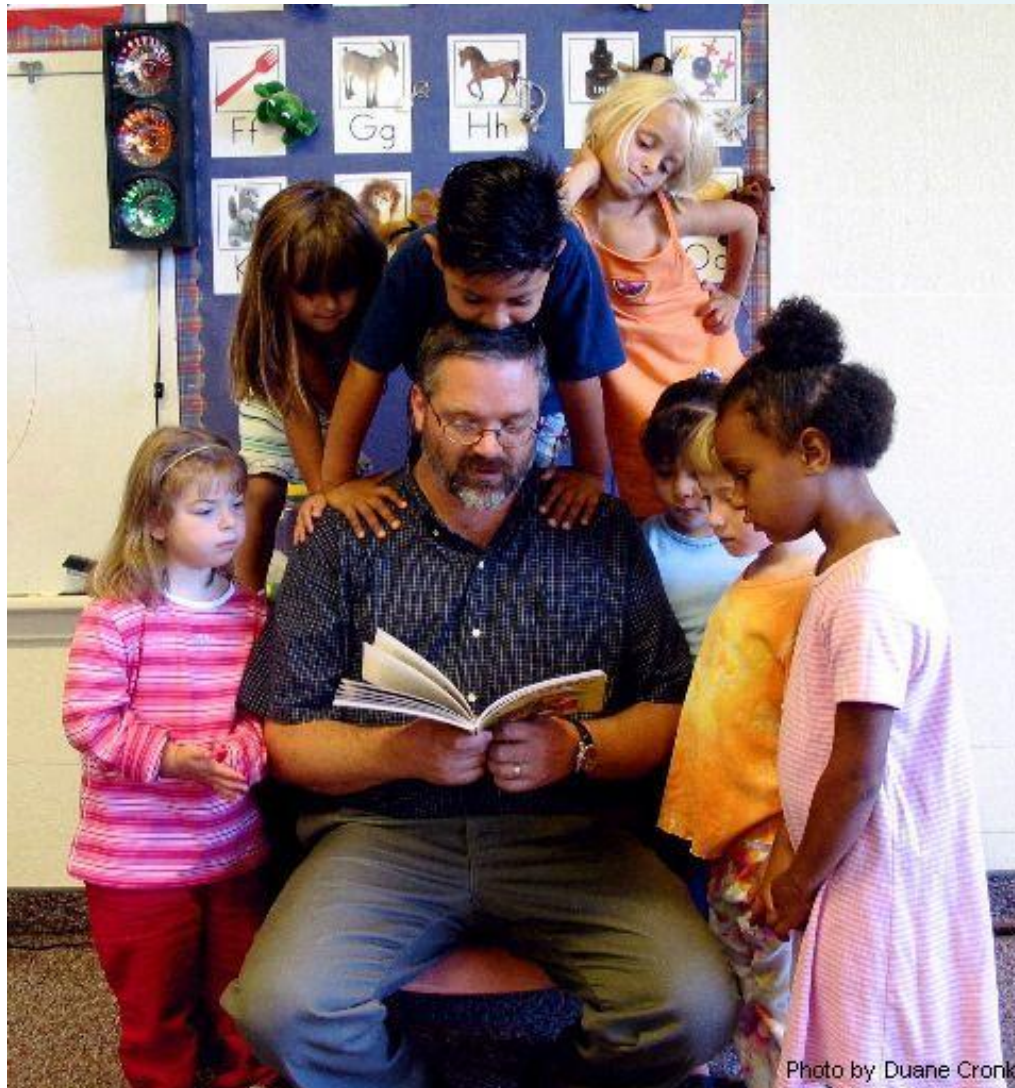


Photo by Duane Cronk

# Being a parent in Sweden

In the mother tongue for target groups and also in cooperation with Swedish for immigrants.

- 5-8 occasions x 2 hours.
- Parents need more knowledge about Swedish conditions to be able to better support their children's development

## **Themes:**

- The Swedish education system.
- Parents responsibilities, obligations and rights concerning preschool and school. The school's mission and responsibilities
- Parent's important role in child development
- Attention and praise in intercourse with the child.
- Equality

Bild A

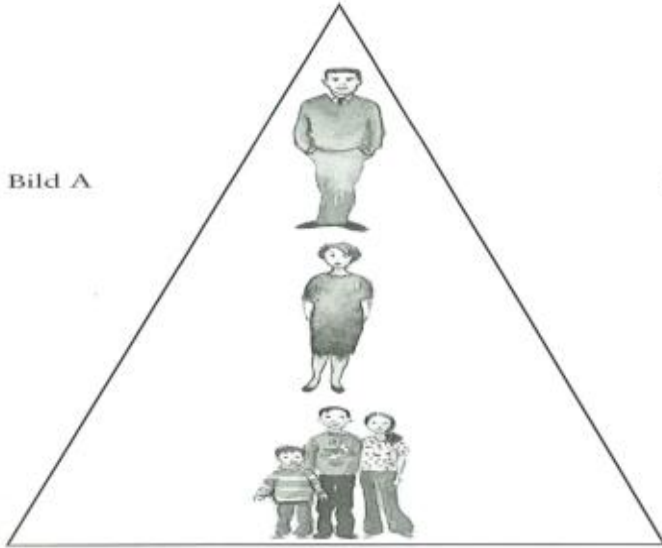


Bild B

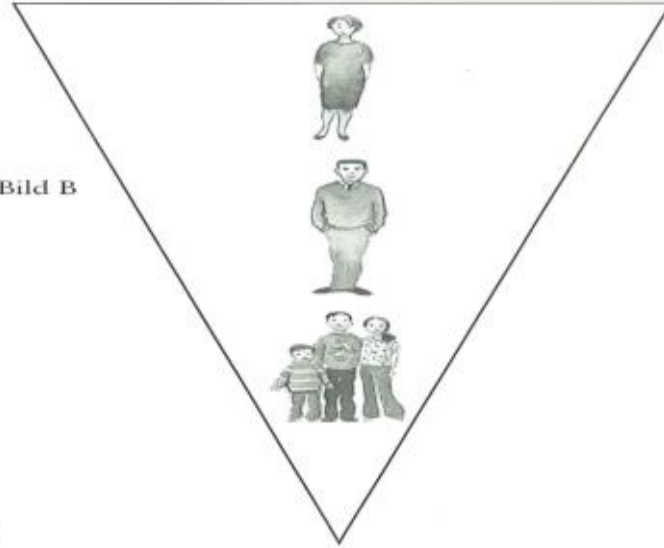


Bild C

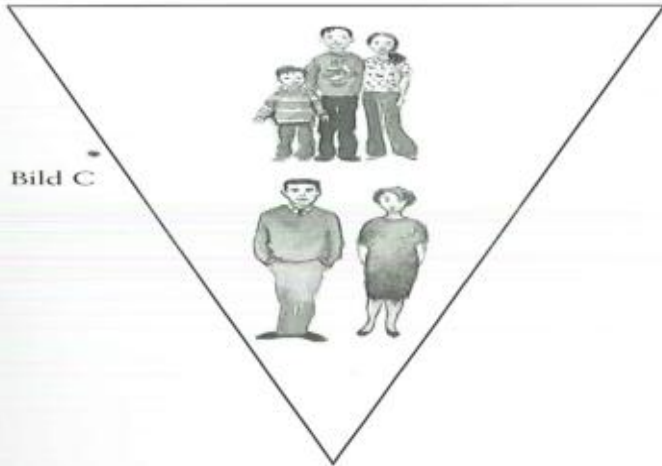
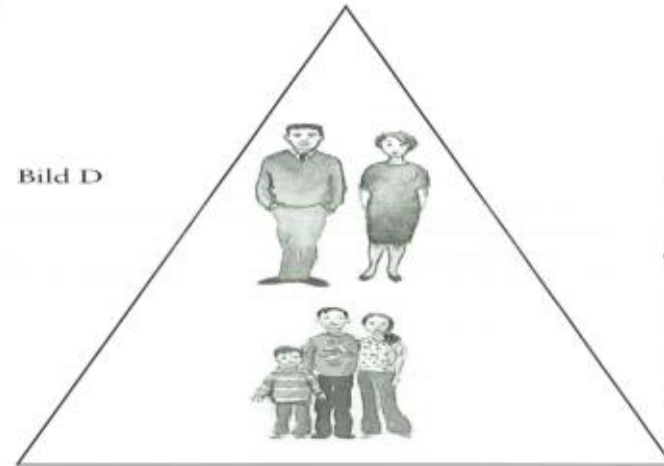


Bild D



NYA FAMILJESTRUKTURER





**A bridge builder in action on a Family Welfare Center**

# Parenting courses

## On different languages

Approximately 40 tutors, whereof 20 with arabic, somalisk, romani and bosnian as mother tongue.

- Copeing with toddlers 1-3 years
- COPE 3-12
- KOMET 3-11
- Connect 11-15
- Teenage-COPE 13-18
  
- Special designed short courses

## Family learning

- Parents and children work together
- We used the method for migrants and their children who needs support in their language development
- Using topics designed to meet the needs of the group
- Make the parents aware that they are their childrens most important teacher
- Bridge builder together with a Swedish pedagogue

## **Bridgebuilders as tutors in the local districts**

Gymnastics for women.

Sew and talking Swedish

Parenting courses

Swim lessons for adults

Learning to cycling

Swedish leaders together with bridge builders

# Integration step-by-step

Step 1: Information and discussion in divided groups and in your own language with fellow countrymen.

Step 2: E.g. Arabic and Somalian together with two bridge builders in both languages.

Step 3: Together with bridge builders and "Swedish" tutors, sometimes outside the local area.

Step 4: Participate in other activities in the society, e.g. NGO, sport, libraries, cultural events.

Step 5: Be a inclusive member of the Swedish society

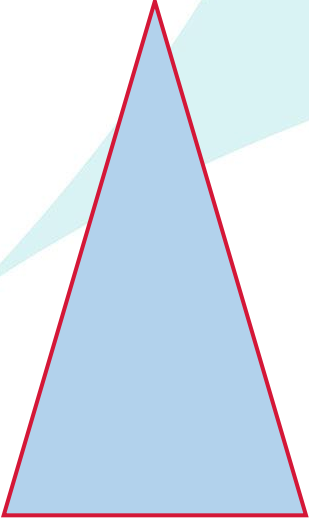
One year

One child in custody for treatment

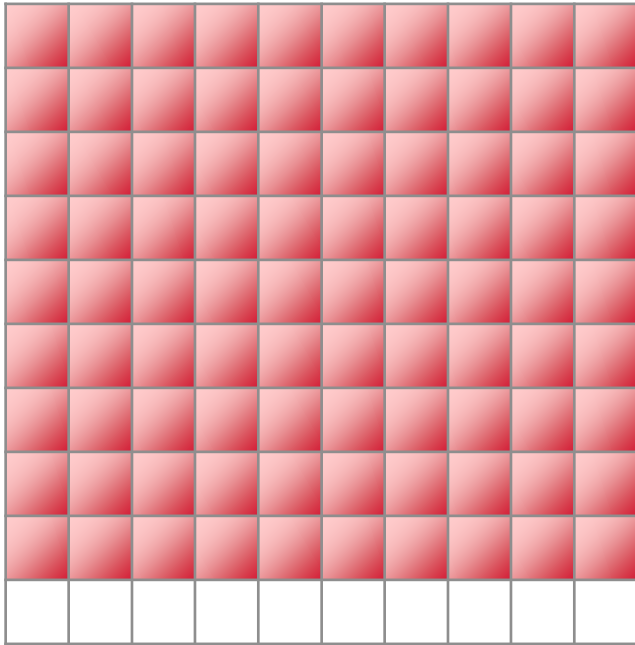
Budget for preventively parenting actions



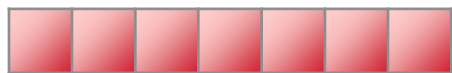
In Linköping approximately 60 youth



# Argument for universal work on a population



90 % - no visible problems

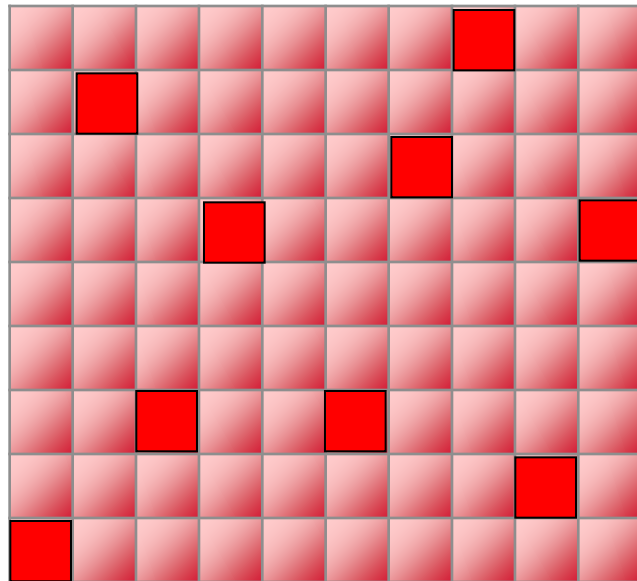


7 % - risk group



3 % - group with problems

# Argument for universal work on a population



RR = 10%



RR = 25%



RR = 40%

Relative risk to later develop a asocial personality

The most number of people with problems are in the normal group.

but we can find the most difficult problems in the group with early problems.



# The End



**Linköping**  
Where ideas come to life